



TK International
020 7794 8700
www.t-k.co.uk

Residential Sales
Residential Lettings
Property Management

Sales Office:
9 Heath Street
Hampstead
London NW3 6TP
E: sales@t-k.co.uk

Lettings Office:
16-18 Heath Street
Hampstead
London NW3 6TE
E: lettings@t-k.co.uk

tk.international
TK International
TK International

Est.
1998



Townshend Estate St John's Wood NW8

A one double bedroom apartment that has been recently refurbished, set within a sought after purpose built block, located moments from St John's Wood high street and underground station. The apartment benefits from a private balcony, communal gardens & a lift.

Council Tax Band: C
EPC Rating: C

£461 Per Week

SOLE AGENT



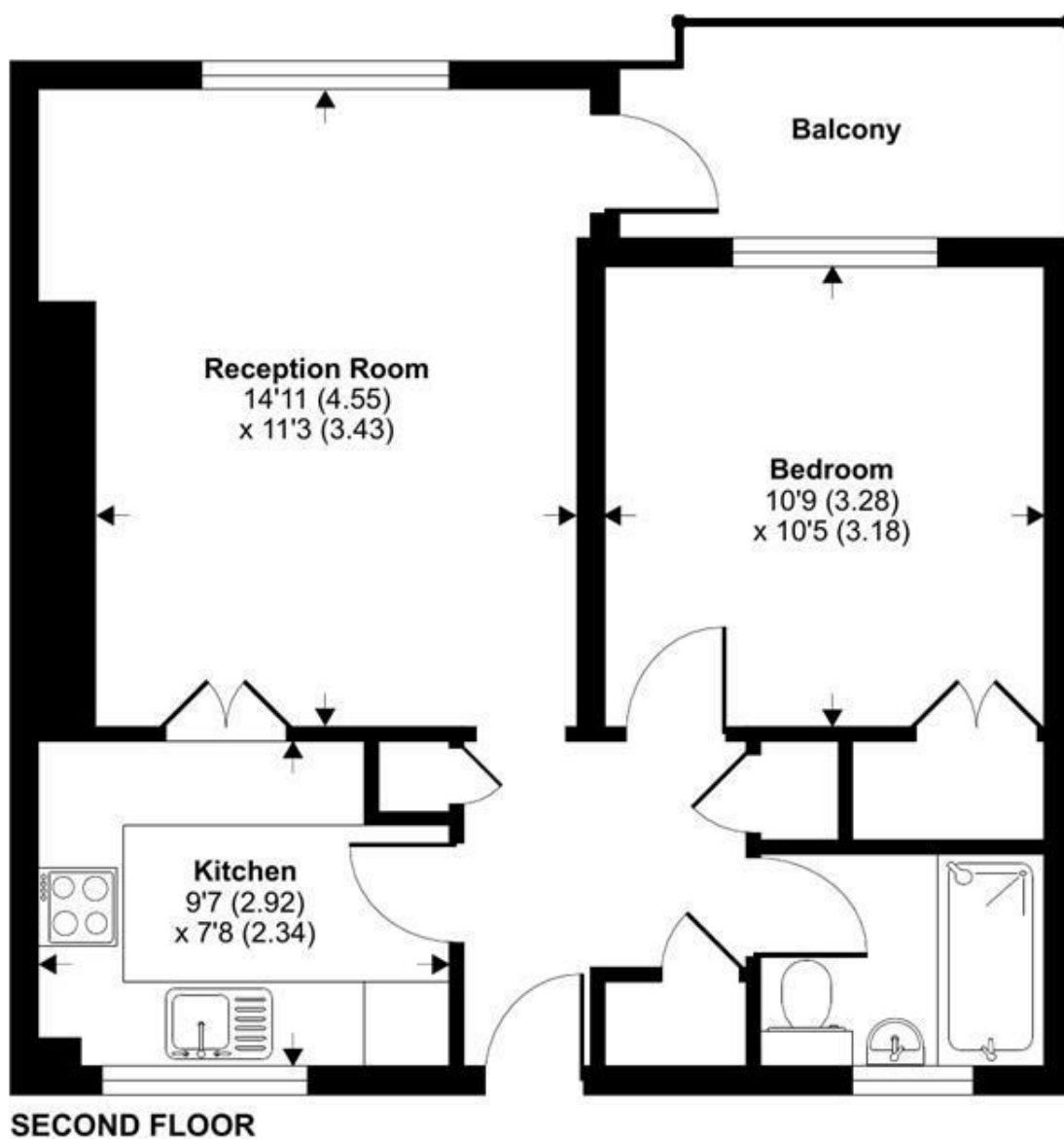




Turner House, Townshend Estate, London, NW8

Approximate Area = 499 sq ft / 46.4 sq m

For identification only - Not to scale



Floor plan produced in accordance with RICS Property Measurement Standards incorporating International Property Measurement Standards (IPMS2 Residential). © nichecom 2022. Produced for TK (Lettings) Ltd. REF: 1027512